

# Product Datasheet

## Quick Ship Emergency Tank Shower - 2000L (528 US Gallons)

### QS2000

Freeze protected emergency tank shower for use in non-hazardous environments. Designed to meet and exceed ANSI standards by providing tepid water for over 15 minutes at a guaranteed flow of 20 US gallons (76 liters) per minute, even when there is no plumbed in water supply.

Features internally mounted, covered eye/face wash unit and rectangular hollow section stainless steel frames designed and built to be earthquake proof, conforming to the California Building Code.

Ready for quick delivery—packed for economical shipment and assembly on-site.



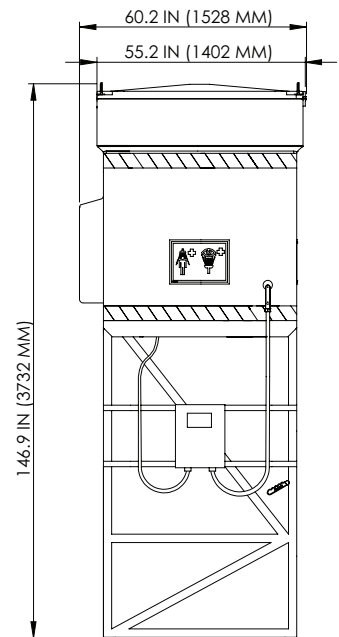
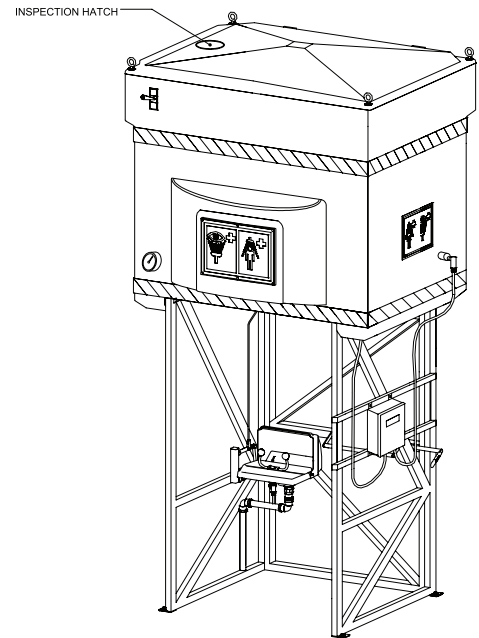
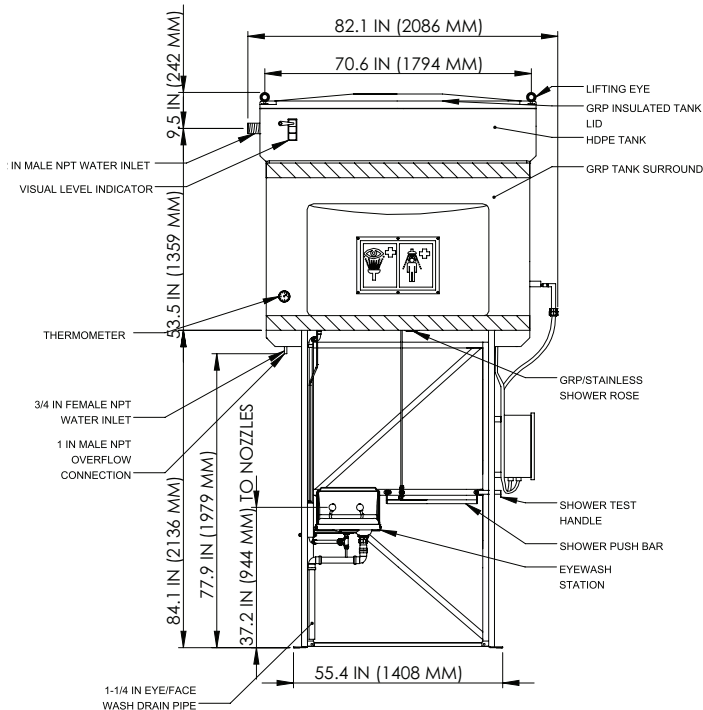
## Specifications

MATERIALS OF CONSTRUCTION	
SHOWER ROSE	GRP and stainless steel
PIPING & VALVE MATERIALS	uPVC and stainless steel
CONTROL VALVE - SHOWER	uPVC 1½ in ball valve
CONTROL VALVE - EYE/FACE WASH	½ in 316L stainless steel full flow ball valve
EYE/FACE WASH STRAINER	½ in stainless steel
OVERFLOW	1 in NPT uPVC
BALLCOCK VALVE	2 x ½ in NPT brass
SHOWER VALVE LEVERS	Red reinforced nylon 6
EYE/FACE WASH VALVE LEVERS	Stainless steel
WATER TANK	2000 liter (528 US gallons) capacity medium density polyethylene
TANK SURROUND AND LID	Heavy-duty GRP in white
SHOWER FRAME AND LEGS	Stainless steel
PULL RODS FOR VALVE ACTIVATION	Stainless steel
ALL FASTENERS AND FIXINGS	Stainless steel
TECHNICAL DATA	
INLET CONNECTION SIZE & TYPE	¾ in NPT Female (interior), 2 in NPT Female (exterior)
SHOWER OPERATION	Panic bar
EYE/FACE WASH OPERATION	Lift lid
SUPPLY PRESSURE	8 to 145 PSI (0.5 to 10 BAR G)
FLOW AT OPERATING PRESSURE	Shower - 76 liters/minute (20 US gallons). Eye/Face wash - 12 liters/minute (3 US gallons)
ELECTRICAL EQUIPMENT - Non-hazardous	Suitable for use in areas classified as non-hazardous
HEATING LOAD	1.7kW
ELECTRICAL SUPPLY	110V, single phase, 50/60Hz
AMBIENT OPERATING TEMPERATURE	
MINIMUM	1C / 34F
MAXIMUM	35C / 95F
DIMENSIONS & WEIGHT	
DIMENSIONS (WxDxH)	2086 mm (82.1 in) x 1528 mm (60.2 in) x 3732 mm (146.9 in)
WEIGHT	Empty: 482 kg (1062 lbs) Full 2482 kg (5472 lbs)

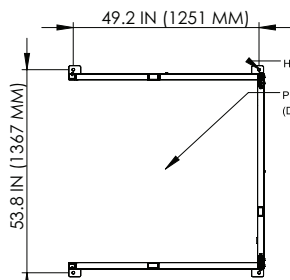
# General Arrangement Drawing

## Quick Ship Emergency Tank Shower - 2000L (528 US Gallons)

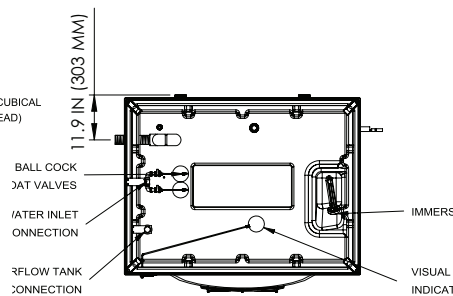
QS2000



SIDE VIEW (EYEWASH OMITTED)



PLAN VIEW DETAILING FOOTPRINT



TOP VIEW OF TANK

### NOTES

DUE TO WELDING TOLERANCES, DIMENSION TOLERANCE IS  
+/- 0.4 IN (10 MM).

TANK VOLUME TO 70.6 FT<sup>3</sup> (2 M<sup>3</sup>).

CENTER OF GRAVITY IS LOCATED NEAR THE CENTER OF THE  
CUBICLE, JUST BELOW THE CEILING.