

Product Datasheet

Trace tape heated floor mounted safety shower

H5G-1H

H5GS-1H

Ensure worker safety in all conditions with this trace tape heated and insulated emergency safety shower. Suitable for hazardous environments, this floor mounted model prevents water within the pipework freezing in colder climates. A constant flow rate of 76 liters (20 US gal) per minute provides a thorough decontamination of a casualty exposed to dangerous contaminants. Meets ANSI requirements.



Specifications

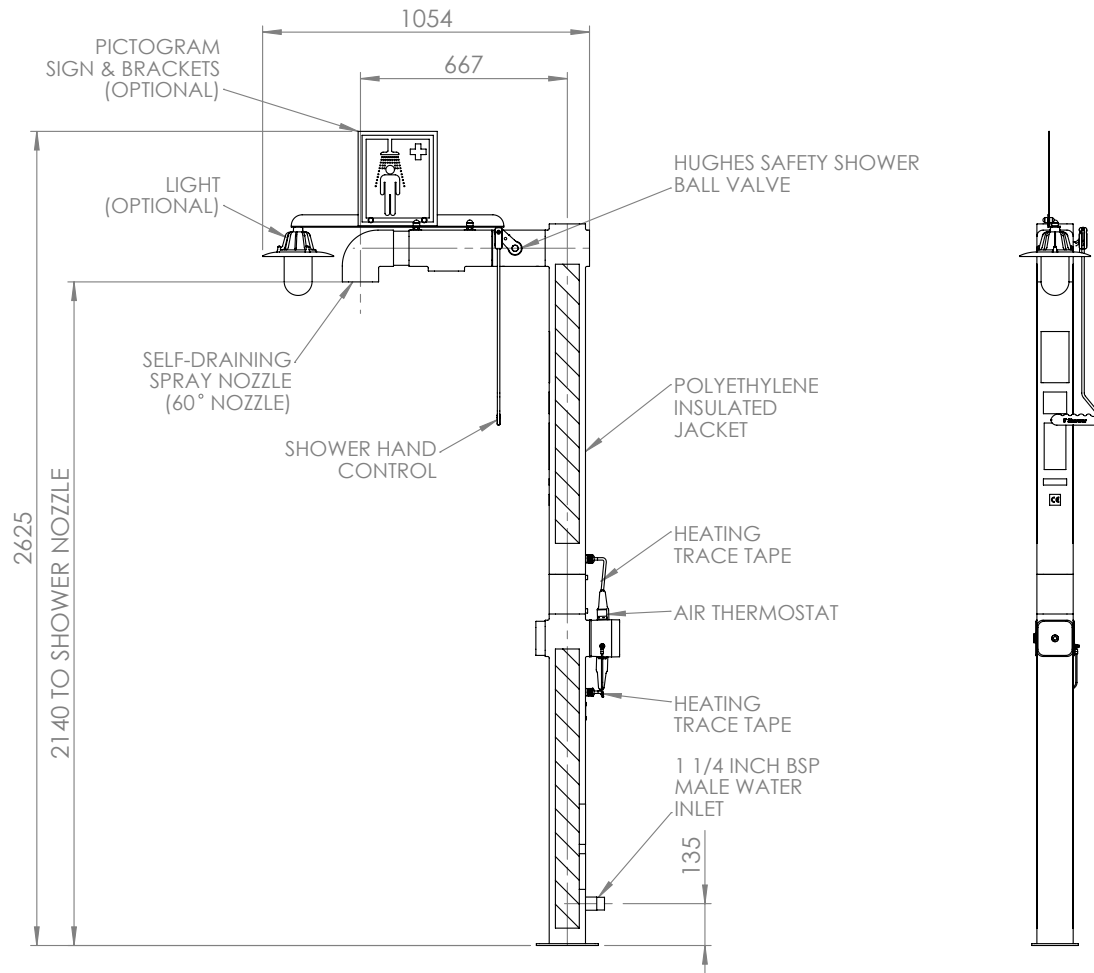
MATERIALS OF CONSTRUCTION	
PIPEWORK & FITTINGS	Stainless steel (GS) or galvanized mild steel (G)
OPERATING VALVE	Stainless steel, full bore, stay open ball valve
SHOWER NOZZLE	Injection moulded nylon 6
INSULATION & OUTER CASING	Polyurethane foam insulation with a medium density polyethylene impact resistant outer casing
SERVICES	
ELECTRICAL EQUIPMENT	CLASS 1, DIV 2, GRPS A, B, C & D
ELECTRICAL SUPPLY	110V, single phase, 50/60Hz
HEATING TYPE	Trace tape heated and insulated
HEATING LOAD	57 watts
WATER INLET	1¼" male NPT
OPERATING PRESSURE	2 to 6 BAR G / 29 to 87 PSI (higher supply pressures accommodated with the incorporation of the optional pressure reducing valve)
MINIMUM FLOW RATES	Shower: 76 L per minute / 20 US gal per minute
AMBIENT OPERATING TEMPERATURE	
MINIMUM	-20C / -4F
MAXIMUM	35C / 95F
OPERATION	
SHOWER	Pull handle
DIMENSIONS & WEIGHT	
DIMENSIONS (WxDxH)	210mm (8.3in) x 890mm (35in) x 2330mm (91.7in)
WEIGHT	21kg (46lb)

General Arrangement Drawing

Trace tape heated floor mounted safety shower

H5G-1H

H5GS-1H



FIXING DETAIL VIEW

