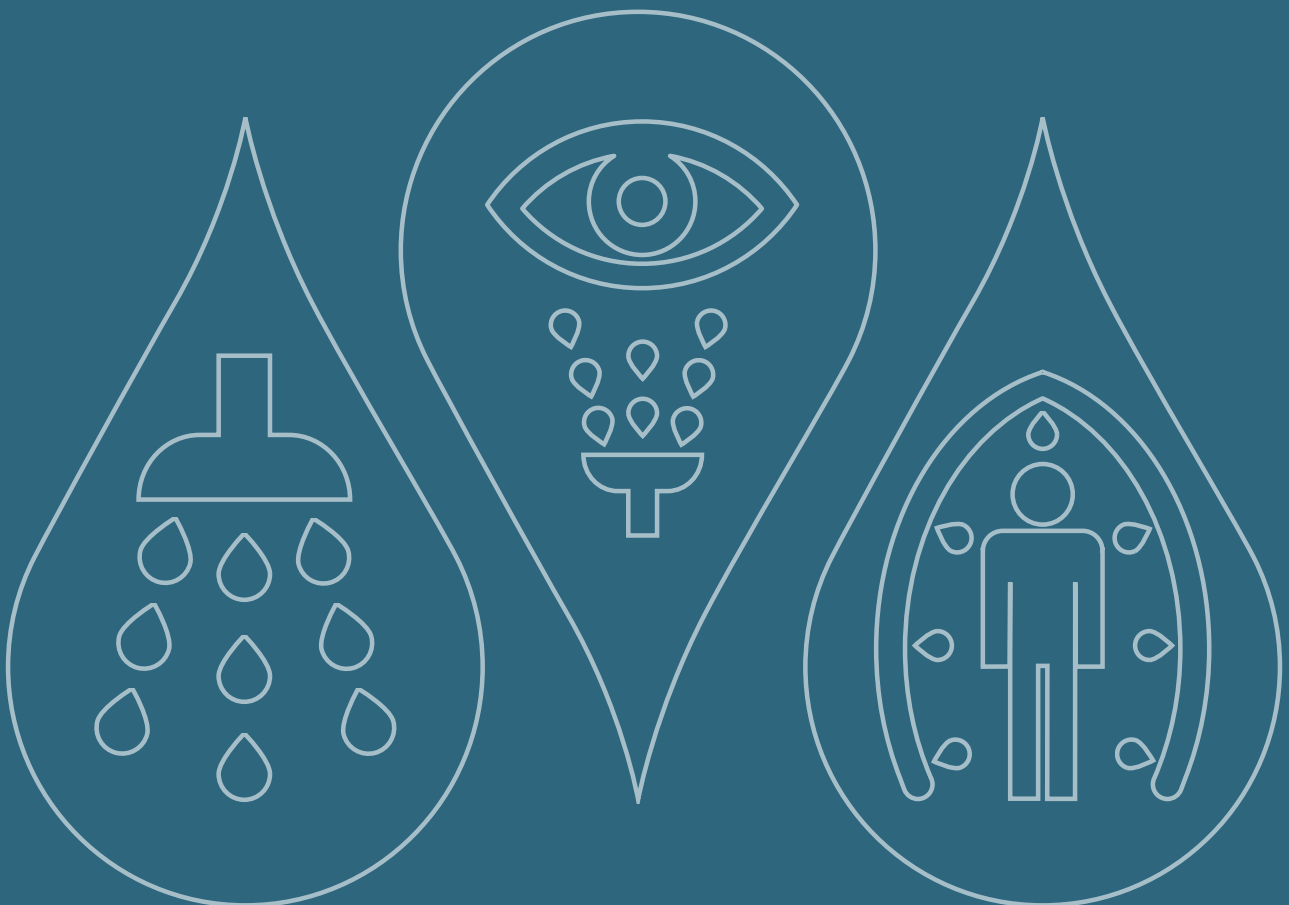


» Emergency Safety Showers and Eye/Face Washes for All Environments



Over 55 years of manufacturing excellence

JD Hughes fabrications, founded in 1950, were erecting pipework in the petrochemical industry when an unfortunate accident became the impetus for developing safety showers and eye washes - long before current HSE/COSHH requirements.

The products were soon in demand, and in 1968 the company began to specifically manufacture emergency shower and eye/face wash equipment. Now an international market leader and part of the Justrite Safety Group, Hughes has sites and customers across the world.

A GLOBAL MARKET LEADER IN THE DESIGN AND MANUFACTURE OF:



Emergency Safety Showers



Eye/Face Washes



Decontamination Equipment

HELPING YOU COMPLY WITH CRUCIAL SAFETY STANDARDS

- EN 15154
- ANSI Z358.1-2014
- DVGW certified

ISO 9001:2015

Quality Management System Certification



PROVIDING INDUSTRY WORLDWIDE WITH A **SAFER** WORKING ENVIRONMENT, GREATER **PROTECTION** AGAINST SERIOUS INJURY AND **COMPLIANCE** TO WORLDWIDE STANDARDS

GLOBAL DISTRIBUTION



Manufacturing and offices in the UK, Canada and Germany, supported by a network of distributors.

Established 1968

SOLUTIONS FOR ALL INDUSTRIES

- Water utilities
- Oil and gas
- Manufacturing
- Pharmaceutical
- Agriculture
- Military
- Offshore
- Mining
-and many more

ADDITIONAL SERVICES & SUPPORT



- Customised solutions project management team
- Engineering and CAD team
- Installation and commissioning
- Dedicated service team
- Hire fleet
- Site assessment
- Spare parts

Contents

How can Hughes help me?	4-5
Understanding European and International Standards	6-7
Tank Fed Safety Showers	8-9
Optional Fittings for Tank Fed Safety Showers	10-11
Indoor Unheated Mains Fed Safety Showers	12-13
Outdoor Safety Showers for Cold Climates	14-15
Outdoor Safety Showers for Hot Climates	16-17
Mobile and Portable Safety Showers	18-19
Eye/Face Washes - Plumbed-In	20-21
Eye Washes - Self-Contained	22-23
Engineered Solutions - custom made products to meet your needs	24-25
Essential Service Contracts	26-27
Spare Parts and Hire Units	28-29
Justrite Safety Group	30-31



Whatever industry you're in, there's nothing more important than keeping your workforce safe – that's where we come in.

Our emergency safety showers, eye/face wash units and decontamination equipment provide you with a safer working environment, greater protection against serious injury and peace of mind that you're compliant with crucial safety standards.

These high-quality products are used in a wide range of industries including oil and gas, offshore, manufacturing and agriculture. They are the first line of defence in the event of an accidental splash or spillage on site. Using them, you can quickly wash off potentially hazardous substances. Without them, you could risk serious injury, permanent disability or even death.

How can Hughes help me?

We provide a complete package that takes care of everything, so you don't have to. This includes manufacturing, installing and servicing safety showers and eye/face washes for a wide range of environments – from the heat of the desert to arctic conditions.

In order to fully assess your needs, Hughes' experts are available to carry out a site survey and recommend the right safety showers for your site. If necessary, we can engineer customised solutions to meet any unique requirements.

You can also take up an Essential or EssentialPlus service contract with us to help prolong the lifespan of your equipment and ensure its safe operation. This guarantees regular checks from highly-skilled engineers who can identify potential problems to prevent serious failures. See pages 26-27 for more information.

Hughes' hire service also allows you to keep your workforce protected during short contracts and annual maintenance shut downs, or when buying equipment isn't an option.



Why work with Hughes?

With a first-class reputation gained from more than 55 years of trading, Hughes is renowned for innovative engineering design, premium-quality products and stringent compliance with European and International standards.

Our company was born of innovation in site safety and has been at the forefront of this field ever since. That's five decades of trusted knowledge and expertise you won't find elsewhere. It's what enables us to fully understand your unique requirements and create customised solutions that meet your needs perfectly.

Quality is our watchword – with all our processes audited to ISO standards, and manufacturers of sustainable, high-quality components in evidence throughout our entire supply chain.

This means that when you buy a product from us, it will be reliable, robust, 100% fit-for-purpose, safety compliant and long lasting.

With sites in the UK, Canada and Germany, and a global network of authorised distributors – you can rest assured you're in safe hands.

» **Five decades of trusted knowledge and expertise.**



Understanding European and International Standards

There are a number of important considerations when selecting the correct safety showers and eye/face washes for your site, the first of which is to understand what is recommended and required by local, European and International standards.

The European standard EN15154 parts 2 and 5, and the internationally recognised ANSI Z358.1-2014 standard recommend performance requirements for industrial eye/face wash units and emergency safety showers. They are focused on the performance, use, installation, testing, maintenance and training of this essential safety equipment. While not legally binding, it is considered best practice to adhere to them in order to remain compliant.

It is advisable to consult the standards in their entirety before making a purchase, here we aim to provide a general overview of the main requirements for the satisfactory operation of emergency safety showers and eye/face wash units.

For a more in-depth summary of the standards, visit: www.hughes-safety.com/standards



Water Temperature

- Water delivered by safety showers should be tepid, between 16C-38C (60F-100F).

At temperatures above 38C (100F) there is the added danger of scalding and increased absorption of harmful chemicals into the skin.

Prolonged exposure to water below 16C (60F) increases the risk of thermal shock or hypothermia and prevents the casualty using the shower to decontaminate effectively for the full 15 minutes.



Adequate Water Flow

- Emergency safety showers should deliver a minimum of 76 litres per minute of potable water for up to 15 minutes in the required spray pattern.
- Eye/face wash units should deliver 12 litres per minute for up to 15 minutes to ensure a thorough decontamination.



Operation

- Equipment must be both accessible and easy to operate, even if the victim has impaired vision.
- The valve must be designed so the flushing flow remains on without the use of the operator's hands, and goes from 'off' to 'on' in one second or less.



Hughes products are DVGW certified.
Contact us to learn more.



Hughes products are manufactured to suit both hazardous and non-hazardous locations.



Location

- Emergency equipment should be installed within 10 seconds reach and on the same level as a potential hazard.
- They must be situated in a prominent position, clearly visible, well-lit and free from any obstructions.



Maintenance

- Emergency equipment must be visually inspected and activated weekly along with an annual service to ensure conformance to EN and ANSI standards.
- A good maintenance program is essential to guarantee reliable and effective emergency equipment.

Further considerations:

Consult the **Safety Datasheet** to identify the chemical, and subsequent hazard.

Consult your **site risk assessment** to determine the specific requirements for emergency safety showers and eye washes, and whether there is an existing **site standard** and/or specification in place for this equipment.

Consider the **location** of the safety equipment;

What is the **ambient temperature**?
Do you have **sufficient drainage**?
Do you have a **potable and reliable water supply** with enough pressure?
Is the shower being used in an **explosive area**?
What are the **electrical requirements** for the hazardous area?

Tank Fed Safety Showers

Effective in environments where a constant water supply cannot be guaranteed. Equally, if there is insufficient water pressure or inadequate flow rates a tank fed safety shower is essential.

These showers are highly customisable with a wide range of optional fittings to suit individual site requirements. Take a look at pages 10-11 for more information.



- Available with a 350 litre or 1500 litre overhead tank
- Meets EN and ANSI standards, providing tepid water for over 15 minutes* at a guaranteed flow of 76 litres per minute from the shower, and 12 litres per minute from the eye/face wash
- Quick and simple to activate using the highly visible panic bar - add an optional foot panel for hands-free operation
- Corrosion resistant, stainless-steel frames are designed to be earthquake proof, conforming to the California Building Code
- Immersion heated models are designed to be operational in temperatures down to -35C
- With the addition of a chiller unit, the jacketed models deliver tepid water in climates up to +55C

*1500L model only.

Emergency Tank Shower Description	SKU
Immersion heated 1500 litre tank fed shower	EXP-MH-14KS/1500
Immersion heated 1500 litre tank fed shower with insulated cubicle and doors. <i>Optional space heater is recommended to maintain the temperature of the cubicle</i>	EXP-MH-14KS/1500-P
Immersion heated 350 litre tank fed shower	EXP-MH-14KS/350
Jacketed and insulated 1500 litre tank fed shower	EXP-J-14KS/1500
Jacketed and insulated 350 litre tank fed shower	EXP-J-14KS/350
<i>An optional lidded GRP eye/face wash is available with all emergency tank showers</i>	

» In cold climates, the immersion-heated and insulated model prevents the water in the tank from freezing, rendering the shower inoperable. Models are available to suit both hazardous and non-hazardous environments.

In environments where temperatures can drop to -50C, the polar tank shower incorporates a double-skinned fibreglass insulated cubicle fitted with internal space heaters to protect the user from the elements.

EXP-J-14KS/350

Jacketed and insulated 350L tank fed shower
Shown with optional ABS closed bowl eye/face wash



EXP-MH-14KS/1500

Immersion heated 1500L tank fed shower
Shown with optional GRP closed bowl eye/face wash



EXP-MH-14KS/1500-P

Polar tank fed shower, suitable for extreme cold climates, features an insulated cubicle with doors



» For indoor use, or outdoors in warm climates, the jacketed and pre-insulated models ensure a steady water temperature is maintained.

In extreme hot climates, the addition of a chiller unit is crucial to prevent water within the tank reaching dangerous levels and potentially scalding a casualty upon activation. Find more information on page 10.

Visit hughes-safety.com to view datasheets featuring full specifications and general arrangement drawings

Optional Fittings for Tank Fed Safety Showers



From oil rigs to water treatment sites, petrochemical plants to mining facilities, emergency tank fed showers are the perfect solution for many industries. They are highly customisable and can be tailored to fit your specific safety needs.

Whether you require audible alarms to alert workers to the shower being activated, signage and lighting to improve visibility or sumps and strip screens to contain contaminated water, Hughes have a wide range of options to explore.

If you have unique requirements simply contact Hughes directly to discuss in more detail.

1500L emergency tank fed shower on site at an agricultural chemical company, customised with a strip screen entrance, audible alarm, temperature gauge and pointer water level indicator



In locations where the ambient temperature can reach up to +55C, the addition of a cooling unit is required to temper the water within the tank to comply with EN and ANSI standards.

With solutions for both hazardous and non-hazardous environments, all cooling units are retrofittable to existing Hughes tank showers.

Cooling Unit Description	SKU
Hughes Zero Power Cooler®	ZPC
Zone 1 flameproof chiller	TS FP CHILLER Z1
Zone 2 flameproof chiller	TS FP CHILLER Z2
Non-flameproof chiller	TS NFP CHILLER



Hughes Zero Power Cooler®



Zone 1 Flameproof Chiller



Zone 2 Flameproof Chiller



Non-Flameproof Chiller

Power required		•	•	•
Maintenance required		•	•	•
Low carbon footprint	•			
Suitable for hazardous environments	•	•	•	
Set water temperature required		•	•	•
Third party tested	•	•	•	
Additional floorspace required		•	•	

Visit hughes-safety.com to view more information and datasheets featuring full specifications

Optional Fittings	
Visually inspect the tank temperature with ease	Temperature gauge
Visually inspect the tank water level using the traffic light system colour coded indicator	Pointer type level indicator
Contain excess water and direct it towards a nearby drain	Drain sump and grating
Automatically replenish a proportion of the water in the tank at regular intervals to prevent bacteria build-up	Syphon dump valve
Provide constant protection against pathogenic bacteria such as Legionella	Hydroclenz



Pictured above (left to right): temperature gauge, pointer type level indicator, drain sump and grating, syphon dump valve, audible and visual alarms

Optional Fittings*	
Alert employees to a casualty using the safety equipment to offer assistance	Audible/Visual alarms and beacons
Additional lighting to ensure the shower is clearly visible in the event of an emergency	Lighting
Offer a hands-free alternative means of activating a safety shower or eye/face wash	Walk-on foot panel and foot treadle
ABS plastic or stainless steel shower roses can be fitted in place of the standard Hughes nozzle	Shower roses
Protect your safety shower or eye/face wash from excessive pressures regardless of fluctuating inlet pressure	Pressure reducing valve
Ensure excessively hot water is released from the supply pipe to prevent scalding of a casualty	Scald protection valve

Also available for the indoor and outdoor range.

External Optional Fittings	
Protect casualties from the elements and provide extra support to the tank frame	GRP panels
Allow easy access to the tank for inspection and maintenance purposes	GRP ladder platform
Reduce the risk of trips and slips upon entering the shower	GRP anti-slip ramps
Offer stability to the casualty while also creating a demarcation zone around the shower	GRP safety barriers
Help prevent over-spray during activation of the shower	Strip screens



View more details on the full complement of optional fittings for all models at hughes-safety.com

Optional fittings for each shower can be viewed in the drop-down list featured on each product page. To request a quote, simply add the item to your enquiry and submit.

Selecting the right options ensures you have the best safety system for your facility while improving safety, increasing functionality and adding convenience.



EXP-J-14KS/1500

Jacketed 1500L tank shower
Shown with optional Hughes Zero Power Cooler,
ladder platform, anti-slip ramps and barriers

Indoor Unheated Safety Showers: Mains-fed

The Hughes mains-fed, unheated safety showers suit a range of indoor applications, including a selection designed specifically for the laboratory environment.

The scope of the range extends from simple wall or ceiling mounted drench showers, ideal where space is at a premium, to cubicle showers with integral drain sumps, and floor standing units complete with eye wash and body spray.

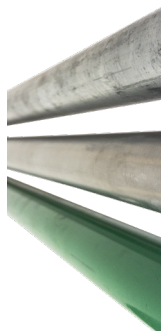


- All models provide 76 litres per minute flow rate from the shower, and 12 litres per minute from an eye/face wash meeting the EN and ANSI standards
- Choice of stainless steel or galvanised mild steel pipework
- Laboratory range - manufactured in easy to clean, corrosion resistant powder coated stainless-steel
- Combination showers available with a lidded, or open bowl eye wash
- Cubicle safety showers feature an integral drain sump to contain contaminated water

Description	SKU - (S) denotes stainless steel model
Drench Showers	
Floor mounted shower	EXP-18G(S)
Floor mounted shower with body spray	EXP-20G(S)
Ring main mounted shower	EXP-23G(S)
Ceiling mounted shower	EXP-23G(S)/V
Wall mounted shower	EXP-23G(S)/H
Over door mounted shower	EXP-23G(S)/OD
Combination Showers	
Floor mounted shower with lidded ABS eye wash	EXP-18G(S)/45G
Floor mounted shower with open bowl ABS eye wash	EXP-18G(S)/75G
Floor mounted shower with open bowl stainless steel eye wash	EXP-18G(S)/85G
Floor mounted shower with lidded ABS eye wash and body spray	EXP-20G(S)/45G
Wall mounted shower with lidded ABS eye wash	EXP-33G(S)/45G
Shower with open bowl stainless steel eye wash mounted within a protective frame featuring hand rails and integral floor grating	EXP-63G(S)
Drench shower and an open bowl stainless steel eye wash each mounted within a protective frame featuring hand rails and integral floor grating	EXP-65G(S)



Unheated shower models are available with a choice of pipework material. They share the same rigidity, strength and UV resistance, yet are often better suited to certain applications and environments.



Galvanised mild steel: a cost effective material suitable for general, non-corrosive environments. Coated internally and externally with a thin layer of zinc to resist corrosion.

Stainless steel: this highly durable and rust resistant piping material is excellent in wet environments, or where salt and sea spray is present.

Powder coated stainless steel (laboratory range only): Ideal for the laboratory setting providing the greatest corrosion resistance and strength, whilst being easy to clean.



Combination models available with a closed bowl ABS eye wash, or yellow ABS plastic or stainless steel open bowl eye wash



EXP-18G/45G

Combination safety shower with ABS lidded eye wash
Shown with optional sign and foot treadle

EXP-18GS/85G

Combination safety shower with stainless steel open bowl eye wash
Shown with optional sign and foot treadle

EXP-SD-31K

Multi nozzle cubicle shower
Shown with optional lidded eye wash

Description	SKU
Laboratory Showers - with powder coated stainless steel pipework	
Ring main mounted laboratory shower	LAB-23GS
Ceiling mounted laboratory shower	LAB-23GS/V
Wall mounted laboratory shower	LAB-23GS/H
Over door mounted laboratory shower	LAB-23GS/OD
Wall mounted laboratory shower with open bowl eye wash	LAB-33GS/34G
Floor mounted laboratory shower with open bowl eye wash	LAB-18GS/34G
Cubicle Showers	
Multi nozzle cubicle shower	STD-SD-31K
Multi nozzle cubicle shower with detergent inducer and hose brush	STD-SD-31K/V
Cubicle shower with closed bowl ABS eye wash	STD-SD-32K/45G



Outdoor Safety Showers: for Cold Climates

Designed to suit the challenges of cold climates and locations, the outdoor tank fed and mains fed models comply to both EN and ANSI standards.

Immersion heated or trace tape heated safety showers prevent water within the pipework freezing when ambient temperatures plummet. Select from wall or floor mounted drench showers, or combination showers featuring an eye/face wash.

See pages 16-17 for safety showers to suit hot climates.



- All models provide 76 litres per minute flow rate from the shower, and 12 litres per minute from an eye/face wash meeting the EN and ANSI standards
- All pipework manufactured from corrosion resistant stainless steel
- Combination showers feature a durable, UV resistant, lidded eye/face wash to protect the bowl and diffusers from external contaminants
- Immersion heating, or trace tape heating, protects water within the pipework against the risk of freezing
- Read more about tank fed safety showers on pages 8-9

Description	SKU
For cold climates	
Trace tape heated shower	EXP-AH-5GS
Wall mounted trace tape heated shower	EXP-AH-2GS
Trace tape heated shower with lidded eye wash	EXP-AH-5GS/45G
Trace tape heated shower with body spray	EXP-AH-5GS/10G
Immersion heated shower with lidded eye wash, body spray and handheld eye bath	STD-MH-15KS/11KS
Immersion heated shower with lidded eye wash and handheld eye bath	STD-MH-5KS/11KS
Temperature controlled shower with lidded ABS eye wash	STD-TC-100KS/45G
Immersion heated 1500 litre tank fed shower	EXP-MH-14KS/1500
Immersion heated 1500 litre polar tank fed shower with insulated cubicle and doors. <i>Optional space heater is recommended to maintain the temperature of the cubicle</i>	EXP-MH-14KS/1500-P
Immersion heated 350 litre tank fed shower	EXP-MH-14KS/350



EXP-MH-14KS/1500-P

Polar tank shower for extreme cold climates, featuring an insulated cubicle with doors



Trace tape heated or immersion heated?

Designed to suit the challenges of cold climates, these showers prevent water within the pipework freezing, rendering the equipment inoperable.

When deciding which outdoor model to choose, the ambient temperature of the location must be considered. Immersion heated or trace tape heated models will operate in ambient temperatures down to -35C and -20C respectively.

For extreme cold climates, the polar tank shower features a double skinned fibreglass insulated cubicle with doors. For maximum protection an optional space heater is available to maintain the temperature of the internal cubicle, even when temperatures drop to -50C.



STD-MH-5KS/11KS

Immersion heated shower with eye wash and handheld eye bath
Shown with optional foot treadle



EXP-AH-5GS/45G

Trace tape heated shower with lidded eye wash
Shown with optional sign and foot treadle



EXP-AH-2GS

Where space is at a premium, the wall mounted trace tape heated safety shower is ideal.



STD-TC-100KS/45G

Suitable for outdoor, or indoor, use in ambient operating temperatures down to -25C.

The integral heated water tank remains on standby to deliver 15 minutes of water within the tepid range. This model can be used in areas classified as hazardous or non-hazardous.

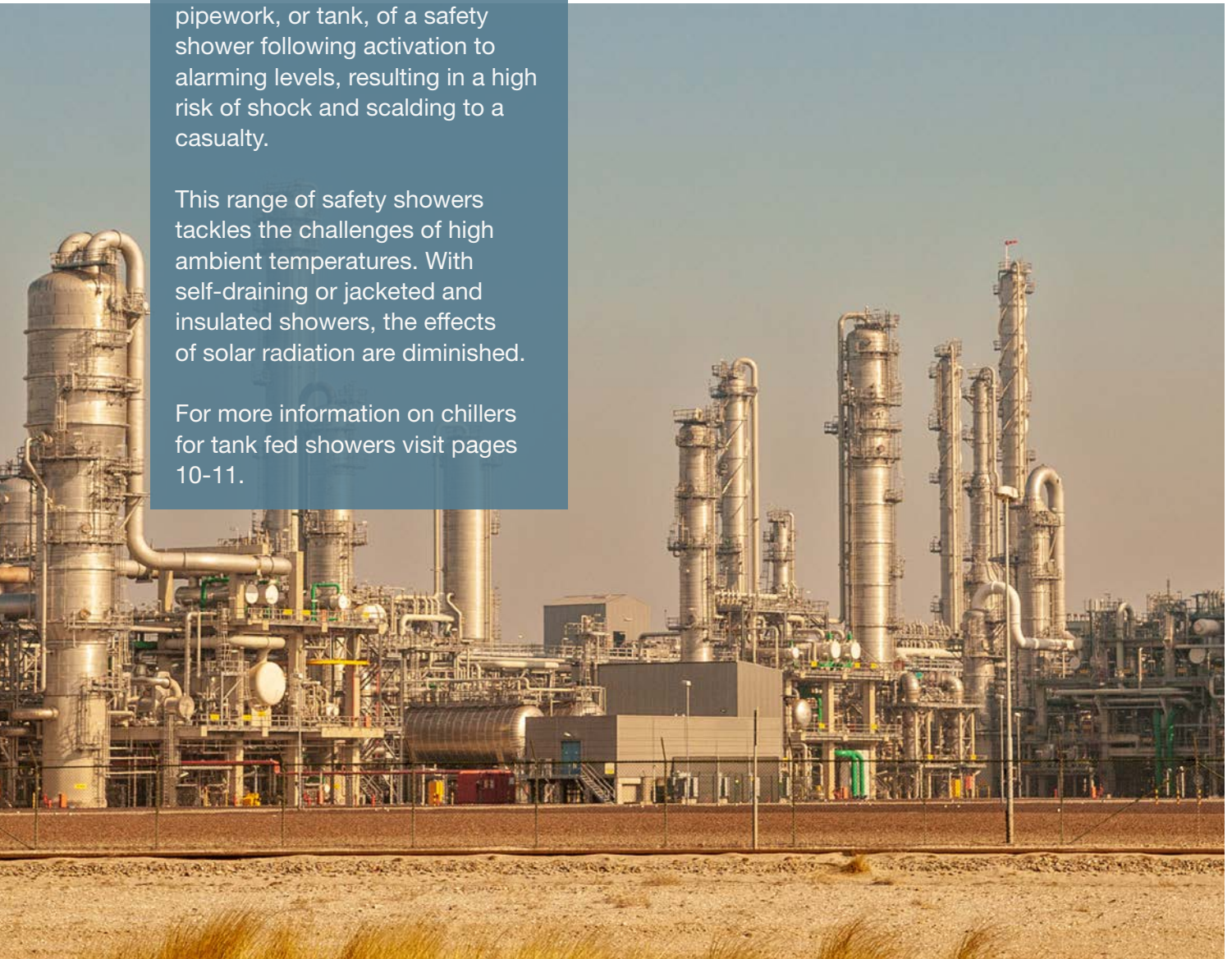
See page 9 for more information on immersion heated tank fed showers

Outdoor Safety Showers: for Hot Climates

In extreme hot conditions the intensity of the sun can heat standing water left in the pipework, or tank, of a safety shower following activation to alarming levels, resulting in a high risk of shock and scalding to a casualty.

This range of safety showers tackles the challenges of high ambient temperatures. With self-draining or jacketed and insulated showers, the effects of solar radiation are diminished.

For more information on chillers for tank fed showers visit pages 10-11.



- All models provide 76 litres per minute flow rate from the shower, and 12 litres per minute from an eye/face wash for 15 minutes to ensure a thorough decontamination
- Perfect in locations experiencing ambient temperatures of up to 55C
- Choice of simple drench showers, or combination models featuring an eye/face wash and/or body spray
- Meets EN and ANSI requirements
- Suitable for both hazardous and non-hazardous environments



Description	SKU - (S) denotes stainless steel model
For hot climates	
Self-draining drench shower	EXP-SD-18G(S)
Self-draining drench shower with body spray	EXP-SD-20G(S)
Self-draining shower with lidded ABS eye wash	EXP-SD-18G(S)/45G
Self-draining shower with open bowl stainless steel eye wash	EXP-SD-18G(S)/85G
Self-draining shower with open bowl ABS eye wash	EXP-SD-18G(S)/75G
Self-draining drench shower with body spray and lidded ABS eye wash	EXP-SD-20G(S)/45G
Self-draining shower with open bowl stainless steel eye wash mounted within a protective frame featuring hand rails and integral floor grating	EXP-SD-63G(S)
Self-draining drench shower and an open bowl stainless steel eye wash each mounted within a protective frame featuring hand rails and integral floor grating	EXP-SD-65G(S)
Jacketed and insulated shower with lidded ABS eye wash	EXP-EJ-5GS/45G
Jacketed and insulated shower with body spray	EXP-EJ-5GS/10G
Jacketed and insulated safety shower	EXP-EJ-5GS
Jacketed and insulated 1500 litre tank fed shower, with chiller (see p.4)	EXP-J-14KS/1500

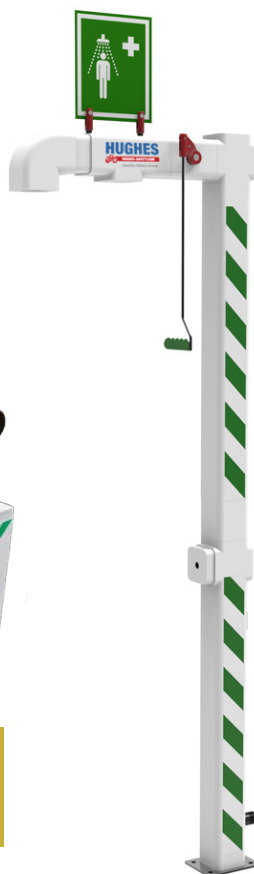
» What is a self-draining shower?

After use, or following a weekly activation, the standpipe of a self-draining shower drains when the valve is closed to prevent stagnant water overheating due to solar radiation, removing the risk of scalding when next used.

The valve is situated directly above the water inlet; the bleed pipe is then fitted above this so standing water can drain to ground. This design allows the shower to be used in temperatures up to 55C, with the addition of a scald protection valve.

» Protect pipework against solar radiation

The jacketed and insulated safety showers are pre-insulated with polyurethane foam surrounded by a polyethylene impact resistant outer casing to protect the water within the pipework from the effects of direct sunlight.



Learn more about the chiller options available for tank showers on pages 10-11

Mobile and Portable Safety Showers

Ideal for stand-by use in hazardous environments where no constant water supply is available, or when existing safety showers are undergoing maintenance.

Allowing flexibility of location and rapid response, whatever the location. The mobile units can act as a secondary safety measure to supplement permanent units - and are particularly useful if the site of the hazard moves as a project progresses, such as the shifting demands of a construction site.



- Suitable for hazardous and non-hazardous environments
- Simple shower activation using the hand lever, while the eye/face wash activates when the lid is lifted
- The mobile, self-contained safety showers are also available to hire on a short or long term basis
- Optional insulated or heated jackets are retrofittable to suit the changing seasons
- The portable 16-nozzle PPE decontamination shower is deployed in less than 2 minutes!

114L Mobile self-contained safety shower

An essential addition to sites where a stationary safety shower and eye wash is unsuitable. The large puncture proof tyres aid mobility, making it easy to manoeuvre by one person.

- 114 litre capacity provides a constant flow of water for over 1½ minutes
- Removable heated or insulated jacket available to protect the unit from the effects of frost and solar radiation
- Features a durable ABS closed bowl eye wash to protect the diffusers from airborne contaminants



STD-MH-P-1200L

STD-J-40K/45G

Mobile safety shower with lidded ABS eye wash and removable insulated jacket



STD-40K/45G

Mobile safety shower with lidded ABS eye wash



1200L Immersion heated mobile self-contained safety shower

Whatever the location, employees at risk of exposure to hazardous substances must be within 10 seconds reach of this safety equipment. The immersion heated 1200 litre safety shower with eye wash offers freedom of location, being easily transported being a suitable vehicle using the towing hitch provided.

- 1200 litre capacity delivers 76 litres of water per minute for 15 minutes, meeting EN and ANSI standards
- Features a durable ABS closed bowl eye wash to protect the diffusers from dust and debris
- Optional insulated jacket available

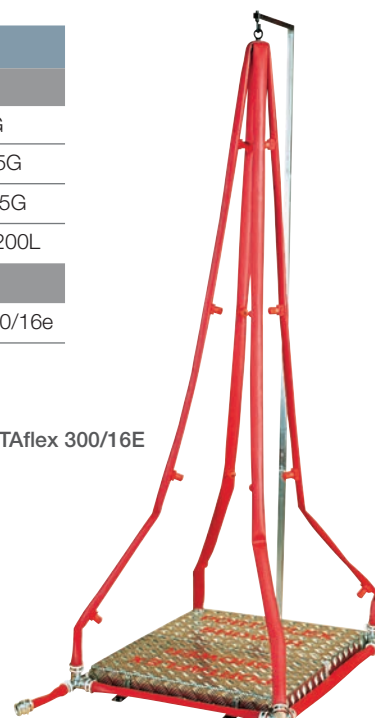
Description	SKU
Mobile and self-contained: AVAILABLE TO HIRE	
114L mobile self-contained shower with lidded ABS eye wash	STD-40K/45G
114L mobile self-contained shower with lidded ABS eye wash and removable insulated jacket	STD-J-40K/45G
114L mobile self-contained shower with lidded ABS eye wash and removable heated jacket	STD-H-40K/45G
1200L mobile self-contained shower with lidded ABS eye wash	STD-MH-P-1200L
Portable Decontamination	
Multi nozzle portable PPE decontamination shower	PORTAflex 300/16e

Multi nozzle portable PPE decontamination shower

In emergency response situations fast deployment of decontamination equipment is a priority. Ideal for first responders, this lightweight and robust shower can be deployed in less than 2 minutes.

- Hoses become rigid under water pressure, adopting a curved form to give a full body 360° PPE decontamination via the 16 nozzles
- Rugged carry case duals as an effective non-slip base platform

PORTAflex 300/16E



Eye/Face Washes: Plumbed-in

Wall, table, pedestal or bench mounted, whatever the environment there is a plumbed-in eye/face wash to fit your requirements.

As with our safety shower range, outdoor ambient temperature challenges are met with models designed to protect pipework from the effects of freezing or solar radiation. Plus, eye/face washes designed for the laboratory.



- EN and ANSI compliant flow rates of 12 litres per minute for over 15 minutes
- Quick and simple activation methods, with the option of hands-free operation via a foot treadle
- Reliable, potable water supply with an operating pressure of 2 to 6 bar is required. Higher supply pressures can be accommodated with an optional pressure reducing valve
- For the laboratory environment, powder coated stainless-steel eye washes are corrosion resistant and easy to clean



STD-45G



STD-75G



LAB-85GS



STD-25K

Description	SKU - (S) denotes stainless steel model
Plumbed-in: Indoor	
Wall mounted ABS closed bowl eye wash	STD-45G
Wall mounted ABS open bowl eye wash	STD-75G
Wall mounted stainless steel open bowl eye wash	STD-85G
Wall mounted eye/face wash with integral lid and handheld diffuser	STD-25K
Pedestal mounted ABS closed bowl eye wash	STD-45G(S)/P
Pedestal mounted ABS open bowl eye wash	STD-75G(S)/P
Pedestal mounted stainless steel open bowl eye wash	STD-85G(S)/P
Heated pedestal mounted eye wash with ABS closed bowl	STD-IH-45GS/P
Single nozzle wall mounted eye, face and body shower	Optiflex 100
Single nozzle table mounted eye, face and body shower	Optiflex 200
Double nozzle wall mounted eye, face and body shower	Optiflex 500
Double nozzle table mounted eye, face and body shower	Optiflex 600
Laboratory	
Wall mounted powder coated stainless steel eye wash	LAB-85GS
Table mounted powder coated stainless steel eye wash	LAB-85GS/T
Pedestal mounted powder coated stainless steel eye wash	LAB-85GS/P
Plumbed-in: Outdoor for cold climates	
Trace tape heated, pedestal mounted closed bowl eye wash	EXP-AH-45GS/P
Trace tape heated, pedestal mounted eye wash with integral lid and handheld diffuser	STD-H-25KS/P
Plumbed-in: Outdoor for hot climates	
Self-draining pedestal mounted eye wash with stainless steel open bowl eye wash	EXP-SD-75G(S)/P
Self-draining pedestal mounted eye wash with ABS open bowl eye wash	EXP-SD-85G(S)/P
Jacketed, pedestal mounted closed bowl eye wash	EXP-EJ-45GS/P



Optiflex 500

Optiflex 200

» Know your activation methods!

Employees must be made aware of the location of safety showers and eye/face washes. In addition, training must be provided as to how to activate and use the equipment.

There are numerous activation methods across the range of plumbed-in and self-contained eyewashes which may differ from other models that have been used previously. To avoid any delay in treatment when required, ensure all employees understand how to use the eye washes on site.

- Pull down lid or manifold • Lift lid up •
- Pull down lever • Lock on actuating button •
- Push plate • Foot treadle



EXP-SD-85GS/P

Self-draining pedestal mounted eye wash, for use in temperatures up to +55C

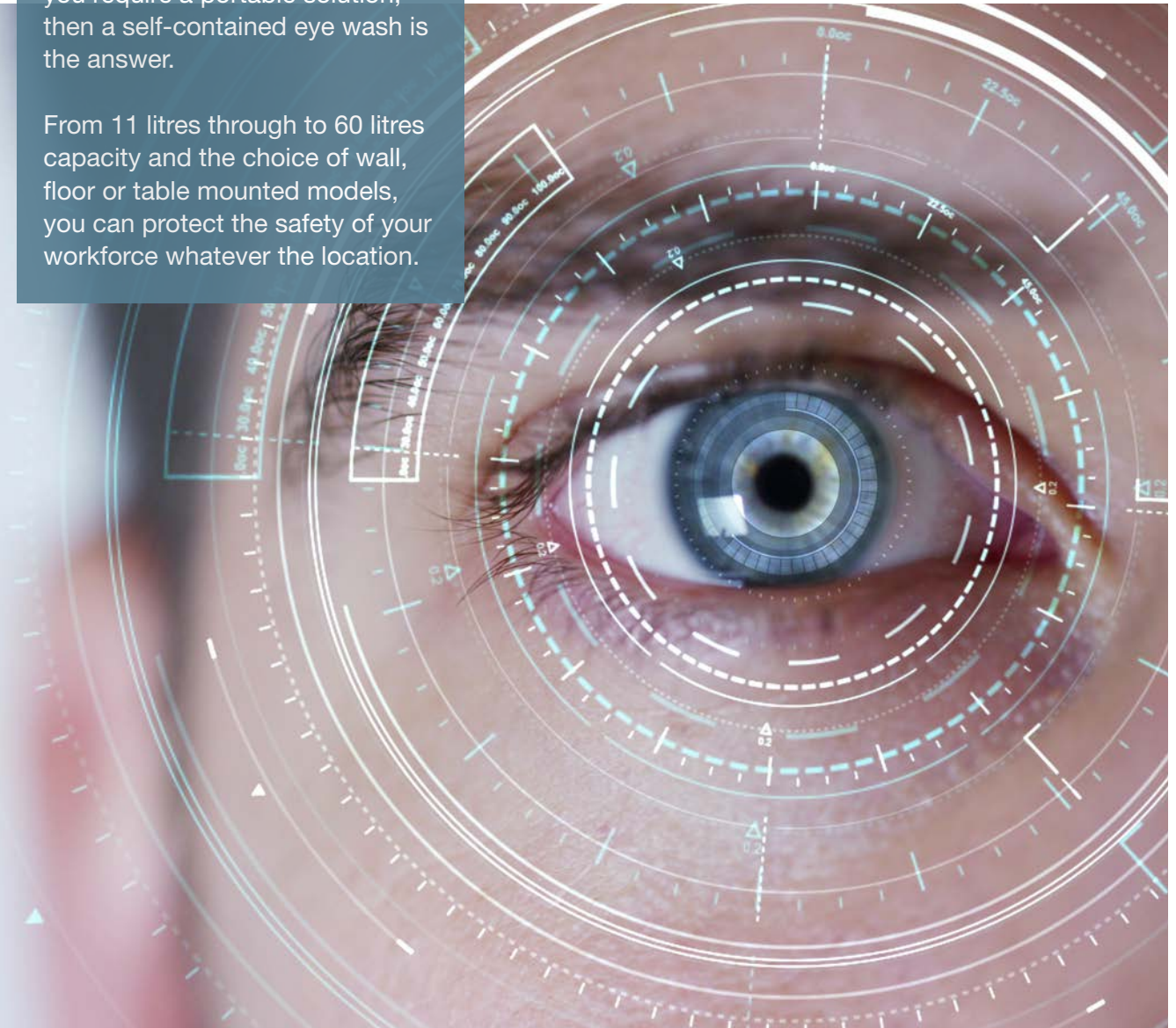
EXP-AH-45GS/P

Trace tape heated pedestal mounted eye wash, for use in temperatures down to -20C

Eye Washes: Self-contained

Where a fixed eye wash installation is not possible, or if you require a portable solution, then a self-contained eye wash is the answer.

From 11 litres through to 60 litres capacity and the choice of wall, floor or table mounted models, you can protect the safety of your workforce whatever the location.



- 38 litre and 60 litre capacity models provide an EN and ANSI compliant flow rate of 3 litres per minute of potable water for 15 minutes
- Suitable for indoor use, or outdoors with the addition of an optional insulated or heated jacket, or heated cabinet
- Quick and simple activation methods
- Pressurised cylinder models are perfect as a secondary safety measure to supplement fixed installation eye wash units



OptiWash®

Wall mounted self-contained gravity fed eye wash - 38 litre

- Slimline 38 litre capacity delivers a controlled flow of a minimum 1.5 litres per minute of water for 15 minutes meeting EN and ANSI requirements
- Delivery manifold drains unused water, reducing the risk of stagnant water becoming trapped
- Removable insulated or heated jacket available to protect the unit from the effects of frost and solar radiation



Wide opening for ease of filling



Optional insulated or heated jackets



STD-68G

Portable self-contained gravity fed eye wash - 60 litre

- Substantial 60 litre capacity delivers a controlled flow of water at a minimum 3 litres per minute for 15 minutes, meeting EN and ANSI requirements
- Pull down manifold for quick and simple activation
- Suitable for indoor use, and with the addition of the optional heated cabinet, can also be installed outdoors



Optional heated cabinet for outdoor use



Water preservative

Help prevent bacteria growth and prolong water quality within the OptiWash and STD-68G. One 236ml bottle preserves 15-76 litres of water for up to 120 days.

Description	SKU
Self-contained and Portable	
38 litre self-contained gravity fed eye wash - wall mounted	OptiWash®
60 litre self-contained gravity fed eye wash - table or wall mounted	STD-68G
11 litre portable self-contained unit with handheld eye wash	STD-28G
15 litre portable self-contained eye, face and body wash	STD-38G
28 litre portable self-contained eye wash	STD-58G



Optional GRP heated cabinet for the STD-28G and STD-38G - can be wall mounted to save floor space

STD-28G

Portable 11 litre water cylinder with a handheld eye bath diffuser on a flexible hose for ease of use.

Provides a gentle flow of water for two minutes.



STD-38G

For effective decontamination of the eyes and face, as well as direct parts of the body using the handheld Optiflex on a flexible hose. Trigger activated for fast deployment.

The 15 litre pressurized cylinder provides six litres per minute of potable water for two minutes.

STD-58G

The push plate activation on this 28 litre portable self-contained eye wash releases the protective dust covers from the diffusers to deliver 1.5 litres per minute of water for up to 15 minutes.

An optional Optiflex can be fitted to the unit for use on body parts subjected to minor contamination





Engineered Solutions – custom made products to meet your exact needs

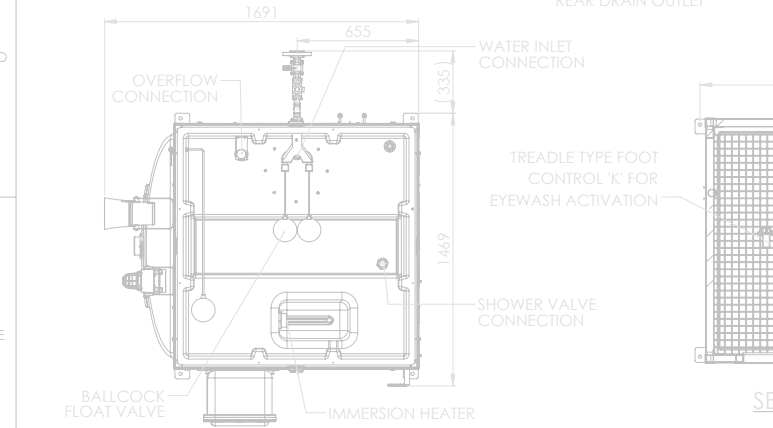
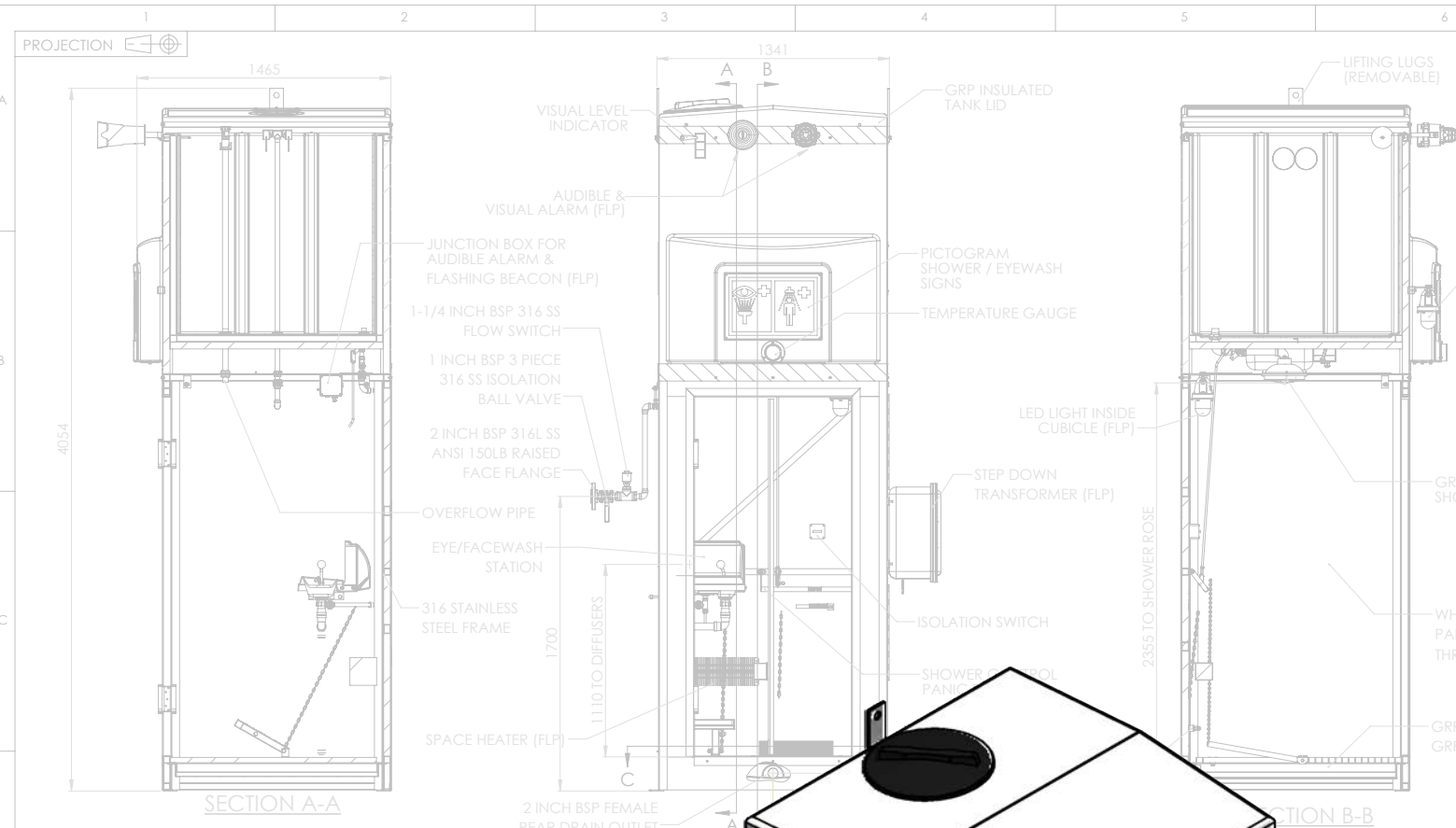
Whatever the demands of your industry or environment, we can custom create safety shower and eye/face wash products to fit your exact requirements – thanks to the design and engineering excellence of our experts who are leaders in their fields.

To achieve this, we bring together our vast pool of knowledge and industry expertise. Through innovation and collaboration with our customers, we deliver the most effective solutions, whatever the requirement, wherever the project.

As part of the Justrite Safety Group, we have access to an extensive line of industrial safety products including safety cabinets, safety cans, secondary spill containment (spill pallets, bunds), and outdoor chemical storage buildings.

Our services include:

- Project planning – using a dedicated team of mechanical and electrical engineers
- Customised engineering and design using SolidWorks® CAD software
- Site surveys and risk assessments
- Third party certification, inspection and testing to all relevant standards
- The complete package – design, manufacturing, installation, commissioning, training, after-sales service and extended warranties

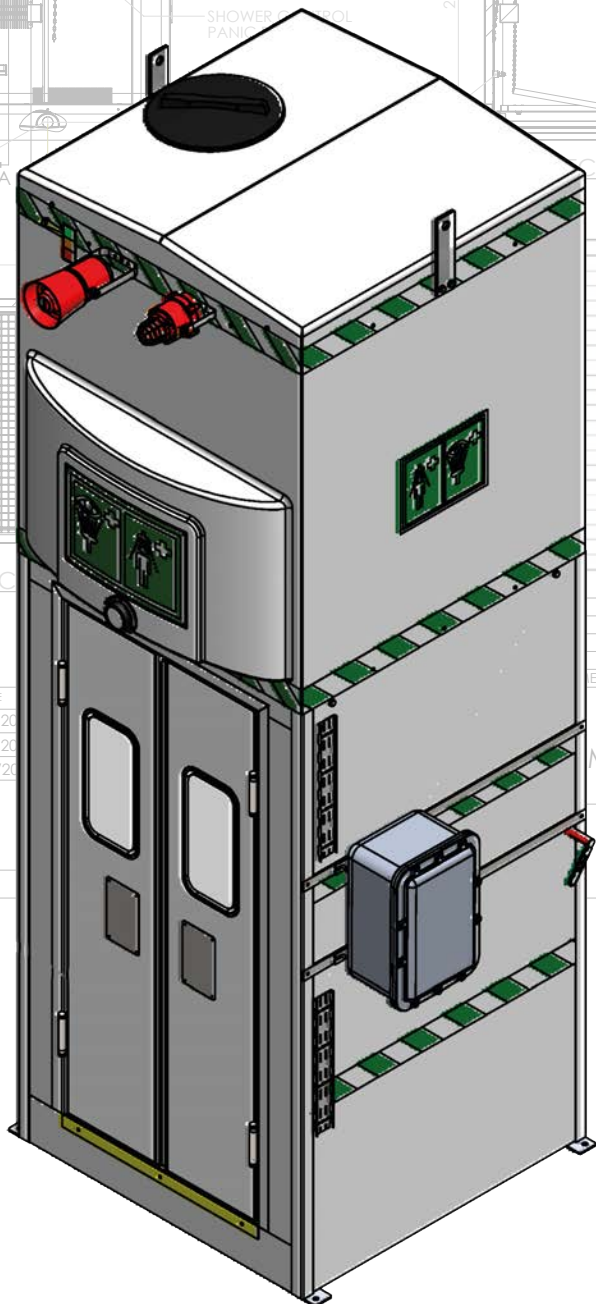


Whitefield Road, Bredbury
Stockport, Cheshire, SK6 2SS
T: +44(0)161-430-6618
E: sales@hughes-safety-showers.co.uk

	NAME	DATE
DRAWN:	AV	25/01/20
CHECKED:	JH	31/03/20
APPROVED:	JH	31/03/20

MATERIAL:
VARIOUS

Tag No
FS-0122
SAF-0308
LBF-0113
FS-2187
SAF-2110
LBF-2119
FS-6132
SAF-6106
LBF-6106
FS-6131
SAF-6107
LBF-6107
FS-4147
SAF-4106
LBF-4106
FS-5102
SAF-5104
LBF-5101
FS-8021
SAF-8006
LBF-8006



ISOMETRIC VIEW

EXP-MH-14KS/1500-P

Polar tank shower customised with EXD step down transformer, internal space heaters and independent thermostat. Plus alarm and beacon.

MODEL:
CODE: 03
EMERGENCY TAN
STAINLE

SHEET 1 OF 1



Protect your workforce - without fail

A regular service and maintenance routine for emergency safety showers and eye/face washes is essential to ensure this life-saving equipment operates effectively first time, every time.

If equipment fails to function correctly or further injures an employee then significant fines, or even imprisonment, are enforceable.

European and International standards recommend an in-depth annual inspection to achieve compliance.

By their very nature, safety showers and eye/face washes possess traits that pose a risk of harmful bacteria growth. Weekly activations are recommended to flush pipes of any sediment build up and minimize the chance of stagnant water.

A regular service goes one step further - all essential parts are cleaned and disinfected, and tank fed showers are emptied and chlorinated.

Additionally, ensuring a service contract is in place will help to keep your products within the terms of your warranty.

Maximise your investment with Essential Service Contracts

Add emergency safety showers and eye washes across your site to a Hughes Essential service contract for complete peace of mind, to ensure compliance and to prolong the lifetime of the equipment.

Our highly skilled service engineers will clean and disinfect all shower and eye wash components and rectify any issues to prevent serious failure.

A detailed site survey report, including images of your equipment, is sent electronically after each visit to allow you to build a comprehensive service history.

Whether you choose Essential or Essential**Plus**, you will receive the same level of professionalism with each and every visit, ensuring your assets are 100% fit for purpose.

	Essential Plus	Essential
Service visits per year	Up to four	Two
Consumables included	•	•
Detailed site survey report	•	•
10% off installation and commissioning	•	•
Introductory site assessment Ensure you have the most suitable equipment, in the right location and functioning as per European guidelines.	•	
Spare parts included*	•	
50% off hire units** If your safety shower is under our repair, hire a temporary self-contained unit at a discounted weekly rate.	•	
Online portal access View your site surveys, scheduled service visits, and more at the touch of a button.	•	

*Terms and conditions apply. **Discount on hire units for a maximum of 4 weeks.

Contact our dedicated service and support team for a site specific quote today: service@hughes-safety.com



ON HIRE FROM
HUGHES
HUGHES-SAFETY.COM
+44 (0)1454 400 800 www.hughes-safety.com



You're in safe hands with Hughes

Hughes products are built to last, yet there are some components that should be replaced regularly to maintain good working order. Perhaps an item has suffered accidental damage and you require a replacement.

Whatever the reason, as the manufacturer we have everything you need to keep your equipment in great condition and operating effectively.

Visit hughes-safety.com/spare-parts or call us to purchase spare parts for your equipment. A model reference, order number or photograph is really useful to help us determine the compatible items you require.

Or, stock up on frequently used items such as eye/face wash diffusers which should be replaced every 6 months for hygienic operation and to ensure correct functionality to comply with EN and ANSI standards.

If your safety shower is out of action due to accidental damage then we can offer a temporary unit for hire. Convenient and affordable, our hire option allows

companies to remain compliant for a monthly fee. Safety shower hire is also ideal for short-term needs, and to meet compliance while waiting for funding or for the completion of a permanent or custom solution.

Models available for hire:

STD-40K/45G
114L mobile self-contained safety shower
with closed bowl eye wash

STD-MH-P-1200L
1200L immersion heated self-contained safety shower
with closed bowl eye wash




HUGHES®



HUGHES-SAFETY.COM

Justrite Safety Group



Hughes are supported by a global network of distributors who are able to supply our range of premium quality products worldwide.

To find your nearest distributor, visit:
hughes-safety.com/where-to-buy

If we don't yet have a distributor in your area, simply contact us directly to receive further information or a quotation.

Hughes Safety Showers is a portfolio company of Justrite Safety Group®.

AccuFORMNMC™
Justrite Safety Group

BCI
BASIC CONCEPTS INC.
Justrite Safety Group

CHECKERS™
Justrite Safety Group

EAGLE®
Justrite Safety Group

HUGHES
HUGHES-SAFETY.COM
Justrite Safety Group

Justrite®

NOTRAX®
Justrite Safety Group

Jall®
Justrite Safety Group

U.S. CHEMICAL storage®
Justrite Safety Group



Justrite Safety Group offers industrial safety solutions and expert advice from our portfolio companies around the world.

We cover every facet of the industrial safety landscape—from the storage, containments and clean-up of hazardous materials to motion safety and emergency showers.

Whatever your needs, we can help you build the foundation of a safe, productive workplace.



HEAD OFFICE

Whitefield Rd, Bredbury,
Stockport SK6 2SS, UK
Call us on: +44 (0)161 430 6618
or email: sales@hughes-safety.com

For details of our international
offices and global distributors
please visit:
hughes-safety.com/where-to-buy