

# Product Datasheet

## PORTAdec 1000 Portable Emergency Shower

For decontamination of protective clothing or as a temporary emergency shower, the PORTAdec 1000 comprises a robust foldaway frame with integral hood, disposable side sheeting and sump. This portable unit is easily erected for use in just five minutes and is easy to operate using the pull rod handle which activates the overhead shower and lower body jets.



## Specifications

### SERVICES

SUPPLY PRESSURE	2 to 5 Bar G (29 to 72 PSI)
WATER INLET	22mm (1") Geka fitting
WATER DRAIN OUTLET	38mm (1 1/2") Cam lock fitting
COLLECTION SUMP CAPACITY	150 litres (40 US Gallons)

### WEIGHTS and DIMENSIONS

PACKED - (WxDxH)	500mm (19.7in) x 1700mm (66.9in) x 300mm (11.8in)
ASSEMBLED - (WxDxH)	1060mm (41.7in) x 1060mm (41.7in) x 2710mm (106.7in)
WEIGHT	35kg (77lbs)

### OPTIONS

COLOUR AND MATERIAL OPTIONS AVAILABLE ON REQUEST
FLEXIBLE HANDHELD SHOWER AND BRUSH
PORTAheater 100 WATER HEATER
PIPE ASSEMBLY AND FITTINGS FOR PORTAheater 100
WASTE WATER PUMP
GENERATOR (TO CUSTOMER SPECIFICATIONS) 110V/240V - DIESEL OR PETROL
WATER RESERVOIR
DISPOSABLE (OR LIMITED-LIFE) CHEMICAL SPLASH SUITS, COVER-ALL CASUALTY GOWNS AND CONTAMINATED CLOTHING BAGS (SUITABLE FOR TAGGING)
EXTRA LININGS AND SUMPS
VANITY SCREEN TO COVER WINDOW

View our Guide to the ANSI/ISEA Z358.1-2014 International Standard for Emergency Eyewash and Shower Equipment at [www.hughes-safety.com](http://www.hughes-safety.com)



# HUGHES



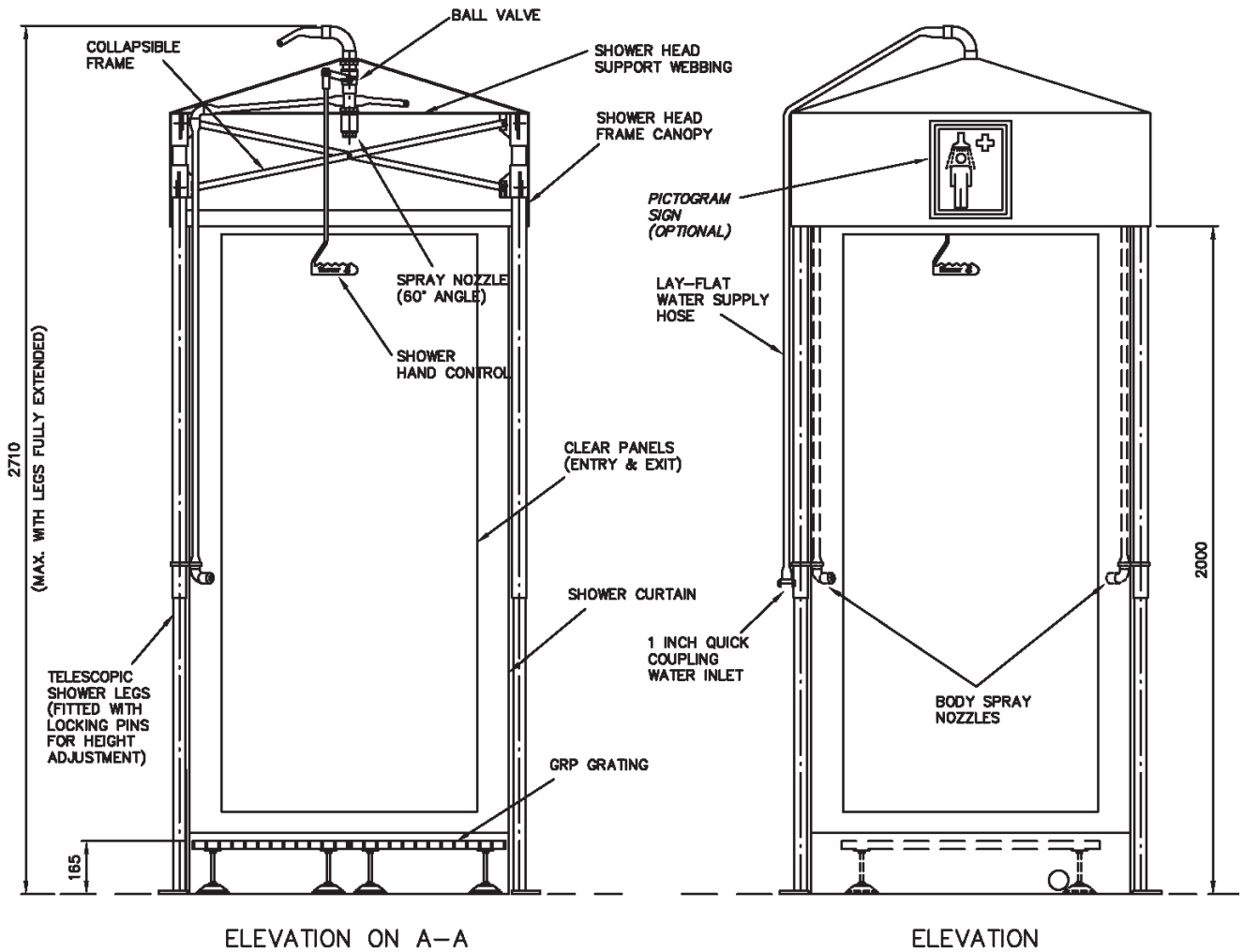
HUGHES-SAFETY.COM

Justrite Safety Group

[www.hughes-safety.com](http://www.hughes-safety.com)

**PORTAdec 1000**

*Portable Emergency Shower*



**HUGHES**



**HUGHES-SAFETY.COM**

Justrite Safety Group

Hughes Safety Showers Ltd, Whitefield Road, Bredbury, Stockport SK6 2SS UK.

Email: [sales@hughes-safety.com](mailto:sales@hughes-safety.com)

Tel: +44 (0)161 430 6618

Registered No. 0939240. VAT Registration No. 918 5005 32. Hughes Safety Showers Ltd is a Justrite Group Company.